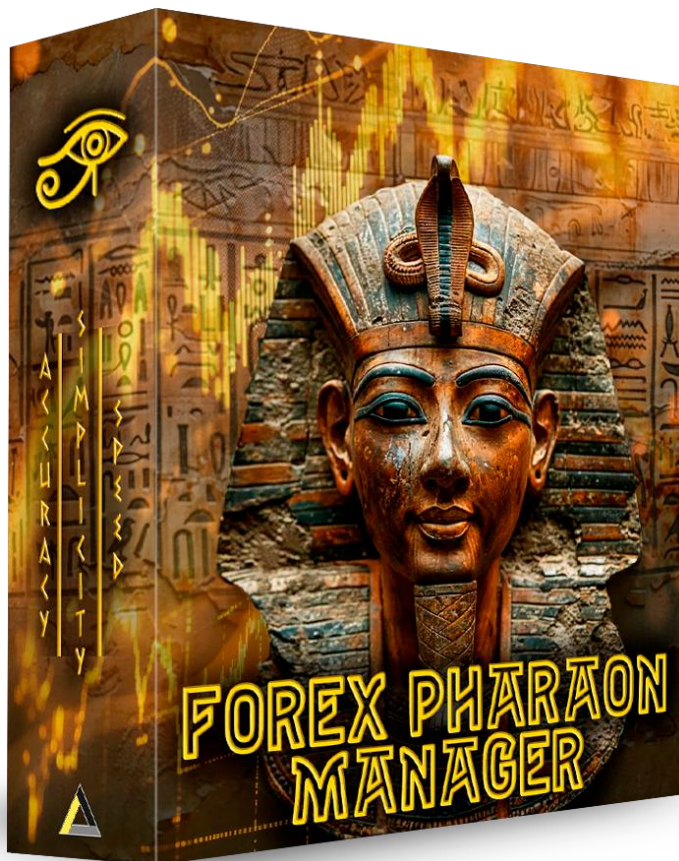


Forex Pharaon Manager



ForexPharaon.com

Modes

Semi-EA:

Enter with 1 click
Exit automatically

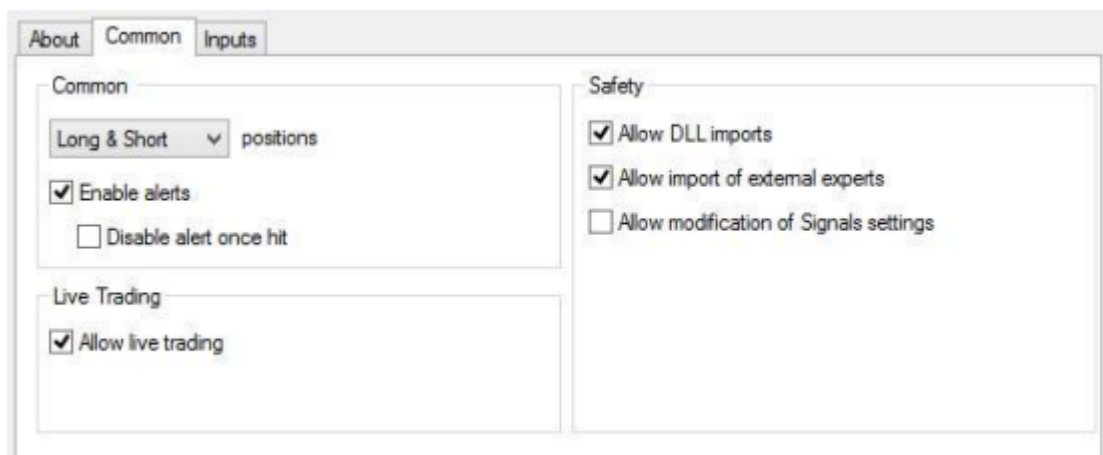
Full AutoMode:

100% automatized trading

Installation

1. Unzip the file you've downloaded.
2. It contains a single file: **Forex_Pharaon_Manager.ex4**
3. Open your MT4.
4. Go to "File – Open Data Folder – MQL4".
5. Copy "Forex_Pharaon_Manager.ex4" from the folder you've downloaded and paste it into the "Experts" folder in MQL4.
6. Restart the MT4.

In order to attach the Manager please make sure to put Forex Pharaon indicator on the chart first and then drag and drop Forex Pharaon Manager to the same chart. Then enable options as shown below and click OK.



Please make sure to enable live trading:



If everything was done correctly, you will see a smiley face in the upper right corner of the chart:

Forex_Pharaon_Manager 😊

PLEASE MAKE SURE THAT YOU'VE REGISTERED YOUR MT4 NUMBERS, OTHERWISE THE SOFTWARE WILL NOT WORK! Contact us at support@altraforex.com if you require assistance with license activation.

Semi-EA Mode (Trading Panel)

Please do not forget to load Forex Pharaon indicator on the chart FIRST, and load Forex Pharaon Manager after that.



After loading both Forex Pharaon and Forex Pharaon Manager, this window will appear on the screen. You can change its position in the Inputs and you can also move the window by dragging it over the chart.

The first line, **AutoMode** is responsible for choosing the mode of the Manager.

- Pressing **On (Full Auto)** button enables AutoMode: in this case the trades will be opened and closed 100% automatically.
- Pressing **Off (Semi-EA)** button enables Semi-EA mode: in this case each time a new signal is generated, a trading panel will pop up on the screen, allowing you to enter trade with one click. After that the trade will be closed automatically.

The second line, **Exit Option** is responsible for choosing what exit the software will aim at in AutoMode.

- Pressing **TakeProfit** or **Opposite signal** button will indicate your choice for an exit option.

The third line, **Trailing Stop** allows to enable the Smart Trailing Stop function.

*Please see the Inputs chapter in the user guide for more information on the settings.

- Pressing **On / Off button** enables or disables this function.

The fourth line, **Lot Size** is responsible for choosing the mode of lot configuration.

- Pressing **Fixed** button allows to manually configure lot size, you need to put the value you choose in the field in the same line.
- Pressing **% risk per trade** button allows you to manually configure percent per trade. For example, if set to 1.0, then you are risking not more than 1% of your balance in case the SL level is reached. You need to put the value you choose in the field in the same line using the % sign (recommended values are 1-3 per trade).

The fifth line, **Enter Trades** is responsible for choosing which trades the tool enters.

- Pressing **All button** will enable the Manager to enter all trades, both Buy and Sell, generated by the indicator.
- Pressing **Only SELL** button will allow the Manager to enter only Sell trades generated by the indicator.
- Pressing **Only BUY** button will allow the Manager to enter only Buy trades generated by the indicator.

The sixth line, **Open hour – Close hour** is responsible for manually configuring active trading hours.

- Set by default to 00:00 and 25:59, which allows 24/7 trading.

The seventh line, **News Filter** is responsible for allowing or prohibiting the trades depending on their proximity to news announcements.

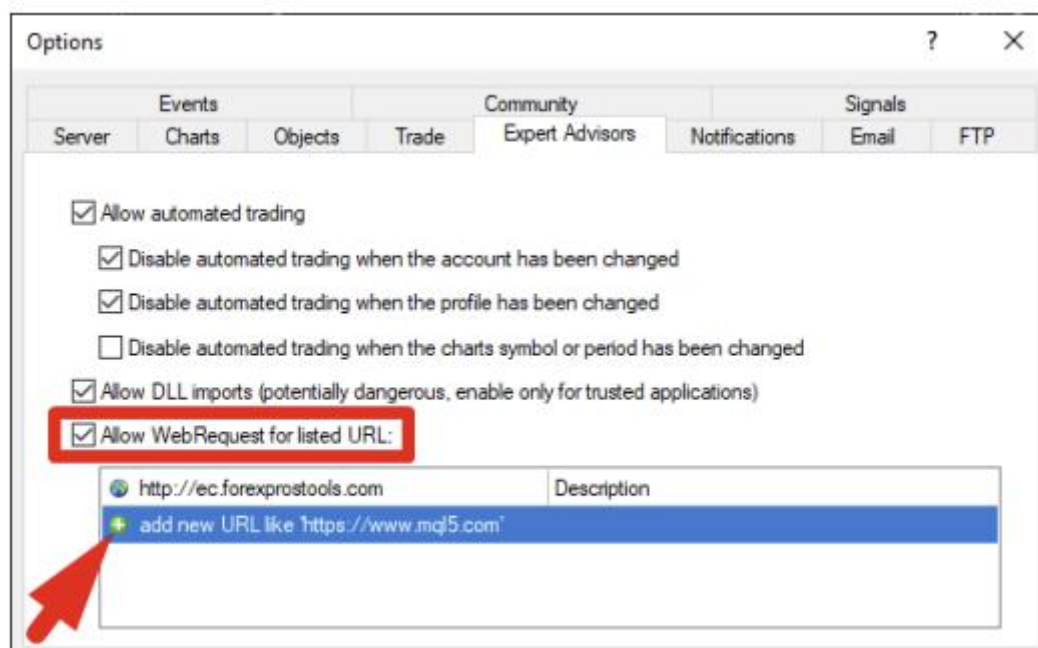
*Please see the Inputs chapter in the user guide for more information on the settings.

- Pressing **On / Off** button enables or disables this function.

Important Rules

If you want to enable News Filter, please go Tools -> Options -> Expert Advisors and enable "Allow WebRequest for listed URL". Then click on the green "plus" button and copy and paste the following address into the field:

<http://ec.forexprostools.com>



Semi-EA Mode (Trading Panel)

| Forex Pharaon Manager BUY | |
|------------------------------|-----------------------------------|
| EURNZD | M15 |
| 2.01538 | 21:15 |
| 14:43 | |
| LOT SIZE | <input type="text" value="0.01"/> |
| Exit at TakeProfit Level | |
| Exit at Opposite Signal | |
| Enter with Traling Stop | |
| Don't Enter | |

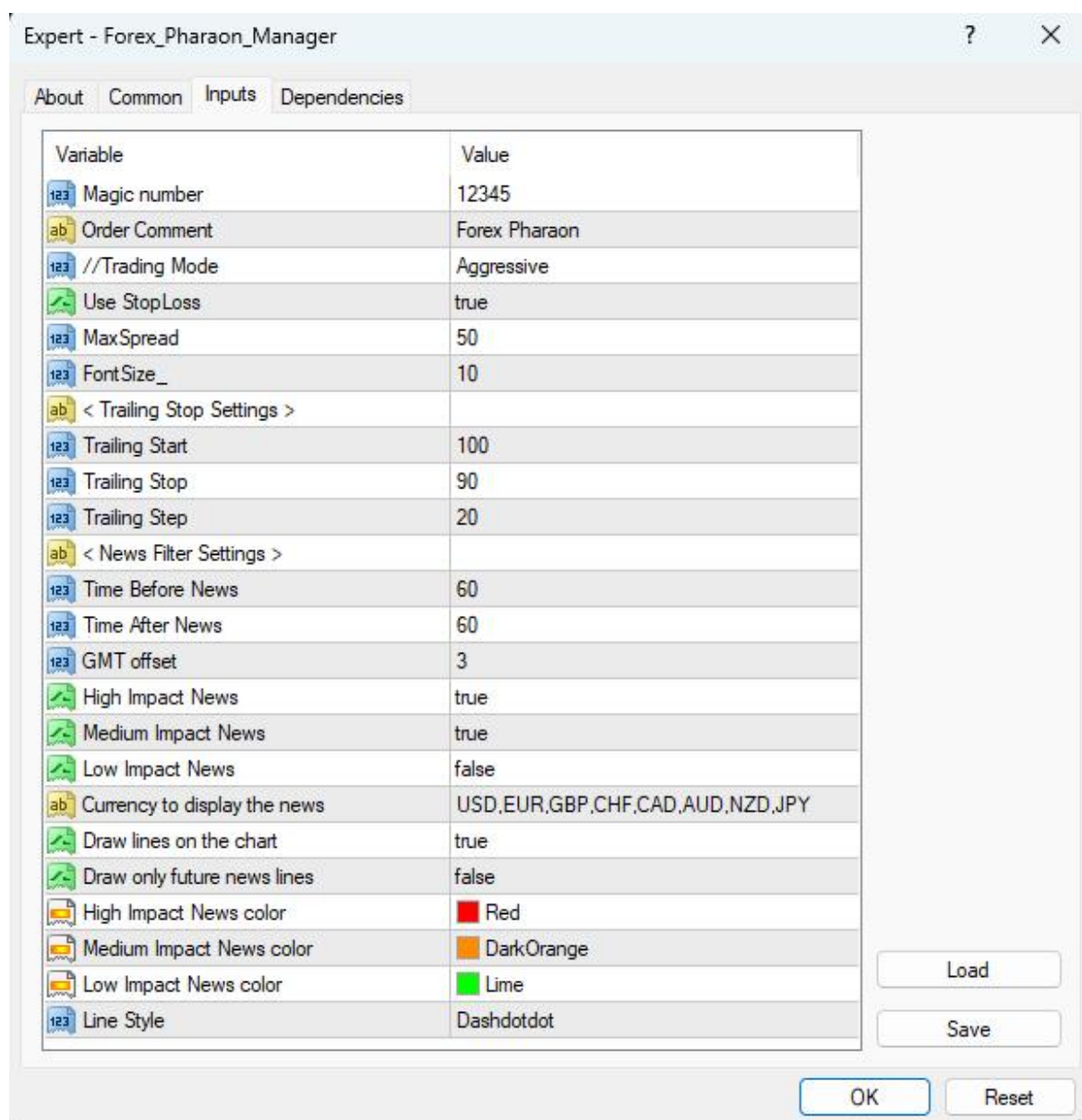
| Forex Pharaon Manager SELL | |
|-------------------------------|-----------------------------------|
| GBPJPY | M15 |
| 202.620 | 18:15 |
| 14:49 | |
| LOT SIZE | <input type="text" value="0.01"/> |
| Exit at TakeProfit Level | |
| Exit at Opposite Signal | |
| Enter with Traling Stop | |
| Don't Enter | |

| Forex Pharaon Manager BUY | | | |
|------------------------------|--------------------------|-----------------------------------|-------------------------------------|
| | | - name | |
| | | - signal | |
| currency pair - | EURNZD | M15 | - timeframe |
| entry level - | 2.01538 | 21:15 | - signal time |
| | 14:43 | | - time left until the window closes |
| | LOT SIZE | <input type="text" value="0.01"/> | - lot size |
| | Exit at TakeProfit Level | | |
| | Exit at Opposite Signal | | |
| | Enter with Traling Stop | | |
| | Don't Enter | | |

Pressing “Exit at TakeProfit Level”, “Exit at Opposite Signal” or “Enter with Trailing Stop” opens the trade with all the necessary settings. Trade will be closed automatically when the opposite signal is generated or at the chosen Take Profit level. If you chose “Exit at the TakeProfit Level” option and the TP level is not reached, the trade will be closed at the opposite signal.

Please note that for Forex Pharaon Manager to run correctly your MT4 should stay opened!

Inputs and AutoMode



Magic number is responsible for displaying the magic number of the software.

Order Comment allows you to manually configure the comment generated by the software at the time of the order opening.

//Trading Mode is responsible for choosing which level of Confirmation to follow when entering and exiting the trades. There are 3 possible options:

Aggressive (default) – the software will enter the trade as soon as the new signal is generated and will exit at any opposite signal, no matter the level of Confirmation for both entry and exit.

Medium – the software will enter the trade when the 2nd Level is generated and will exit at any opposite signal, no matter the level of Confirmation.

Conservative - the software will enter the trade when the 2nd Level is generated and will exit as soon as the 2nd Level is generated for the opposite signal.

Use StopLoss is responsible for enabling or disabling SL levels when entering the trade.

Max Spread is responsible for displaying the highest value which allows to open the trade. Set to 50 by default.

Font Size is responsible for depicting the font in the Manager window. If the text in the window is illegible, please try either changing the screen resolution of your PC or decreasing Font Size value.

< Trailing Stop Settings >

TrailingStart allows you to manually configure the level of gained profit at which TrailingStop starts working. Set to 10 by default. (Shows as 100).

TrailingStop allows you to manually configure the TrailingStop value. Set to 9 by default. (Shows as 90).

TrailingStep allows you to manually configure the variable that TrailingStop will follow each time it changes SL level. Set to 2 by default. (Shows as 20).

< News Filter Settings >

Time Before News allows you to manually configure the time period before news when the trading is prohibited. Set to 60 by default.

Time After News allows you to manually configure the time period after news when the trading is prohibited. Set to 60 by default.

GMToffset is responsible for indicating your correct time zone to the software.

High Impact News, Medium Impact News and **Low Impact News** are responsible for whether or not the trades will be prohibited at the time of those types of news.

Currency to display the news is responsible for the set of currencies for which news filter is active when enabled.

Draw lines on the chart is responsible for displaying vertical lines on the chart at the time of new announcements.

Draw only future news lines is responsible for displaying vertical lines only for the future news announcements.

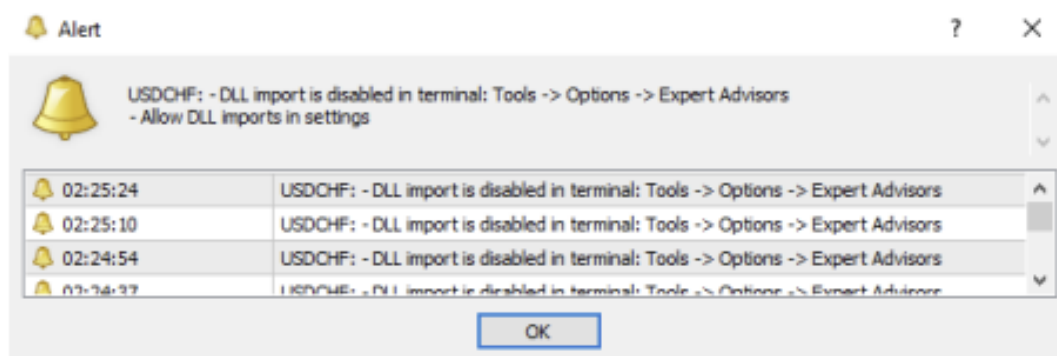
High Impact News Color, Medium Impact News Color and **Low Impact News Color** are responsible for the color of the lines, set by default to green for low impact news, orange for medium impact news and red for high impact news.

Line style is responsible for choosing the style of vertical lines.

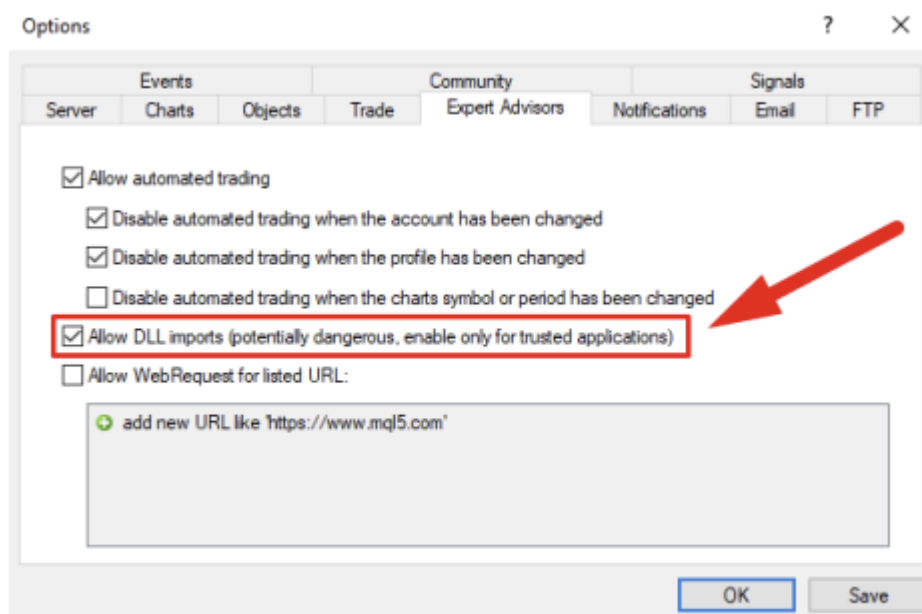
If your Forex Pharaon is not working...

If you think that your software is not functioning properly, there are several possible reasons for that.

1. Please make sure you've unpacked the zip archive with the installation package and installed it into the right folder (**Forex_Pharaon_Manager.ex4** goes into the “**Experts**” folder, not the “**Indicators**” folder).
2. Please make sure that you haven't forgotten to install Forex_Pharaon.ex4 (the indicator) into the “**Indicators**” folder. The Manager will not function without it.
3. If you are getting the message “**DLL import is disabled**” like this:



Then please follow the instructions from the alert, go Tools - Options - Expert Advisors and allow DLL there:



4. If your chart is blank, it is possible that there has been some issue with the activation. Please contact us at support@altraforex.com or via a Telegram [@olivermurphy](https://www.instagram.com/olivermurphy) and we will do our best to try and help you as soon as possible.

5. Even if you have the smiley face in the right upper corner but still feel that your Forex Pharaon Manager is malfunctioning, please open the “Experts” tab in the Terminal. If it says “Activation expired” there, please contact our team.

6. If you have any other concerns regarding your software, please don't hesitate to contact us at support@altraforex.com or via a Telegram [@olivermurphy](https://www.instagram.com/olivermurphy) and we will do our best to try and help you as soon as possible.