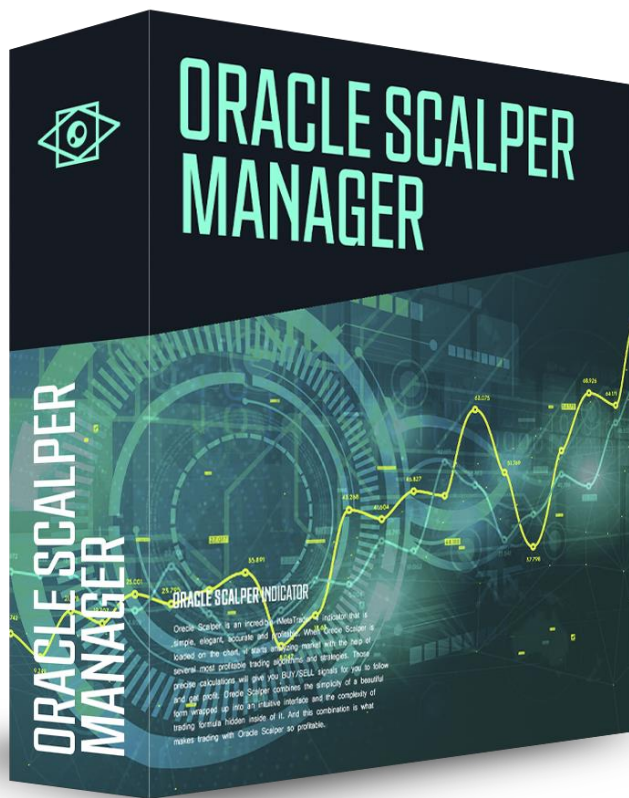


Oracle Scalper Manager



OracleScalper.com

Modes

Semi-EA:

**Enter with 1 click
Exit automatically**

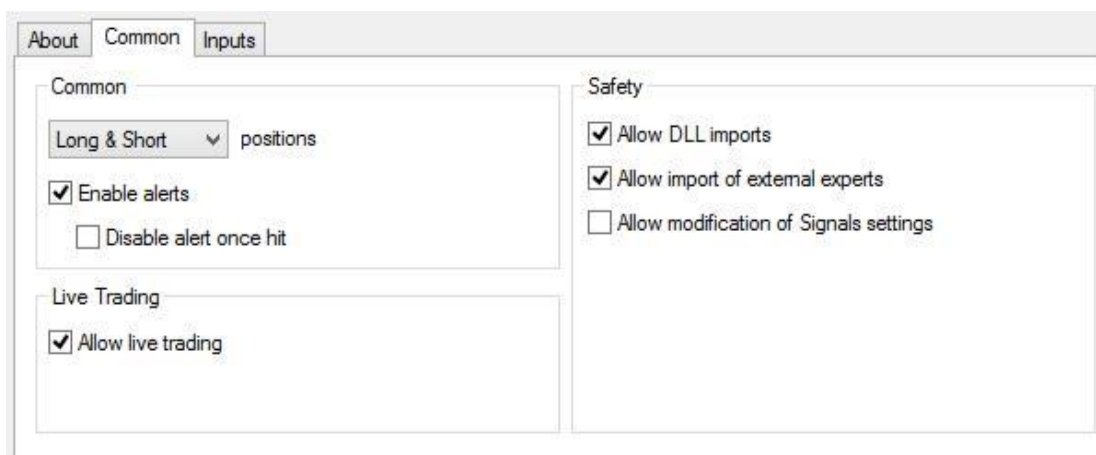
Full AutoMode:

100% automized trading

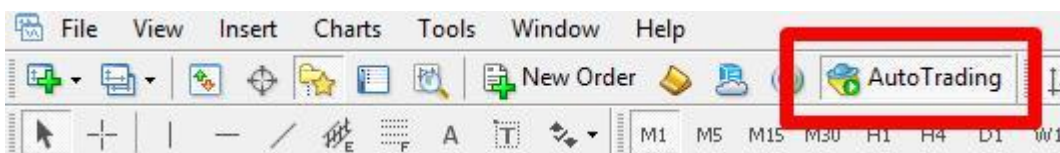
Installation

1. Unzip the file you've downloaded.
2. It contains a single file: **Oracle_Scalper_Manager.ex4**
3. Open your MT4.
4. Go to "File – Open Data Folder – MQL4".
5. Copy " Oracle_Scalper_Manager.ex4" from the folder you've downloaded and paste it into the "Experts" folder in MQL4.
6. Restart the MT4.

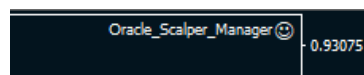
In order to attach the Manager please make sure to put Oracle Scalper indicator on the chart first and then drag and drop Oracle Scalper Manager to the same chart. Then enable options as shown below and click OK.



Please make sure to enable live trading:



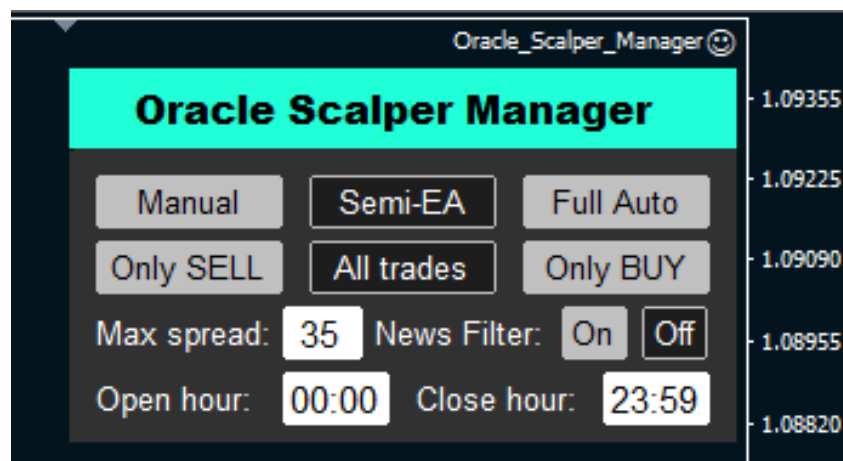
If everything was done correctly, you will see a smiley face in the upper right corner of the chart:



PLEASE MAKE SURE THAT YOU'VE REGISTERED YOUR MT4 NUMBERS BY FILLING OUT THE FORM IN THE MEMBERS AREA, OTHERWISE THE SOFTWARE WILL NOT WORK! Contact us at support@altraforex.com if you require assistance with license activation.

Oracle Scalper Manager Window

Please do not forget to load Oracle Scalper indicator on the chart FIRST, and load Oracle Scalper Manager after that.



After loading both Oracle Scalper and Oracle Scalper Manager, this window will appear on the screen. You can move it for your convenience by dragging the heading on the chart.

The first line, **Manual – Semi-EA – Full Auto** is responsible for choosing the mode of the Manager.

- Pressing **Manual** button disables the Manager and leaves you with manual trading by following the signals of the indicator.
- Pressing **Semi-EA** button enables Semi-EA mode: in this case each time a new signal is generated, a trading panel will pop up on the screen, allowing you to enter trade with one click. After that the trade will be closed automatically.
- Pressing **Full Auto** button enables AutoMode: in this case the trades will be opened and closed 100% automatically.

The second line, **Only SELL – All trades – Only BUY** is responsible for choosing which trades the tool enters.

- Pressing **Only SELL** button will allow the Manager to enter only Sell trades generated by the indicator.
- Pressing **All trades** button will enable the Manager to enter all trades, both Buy and Sell, generated by the indicator.
- Pressing **Only BUY** button will allow the Manager to enter only Buy trades generated by the indicator.

The third line consists of two parts:

- **Max Spread** is responsible for displaying the highest value which allows to open the trade. Set to 35 by default.
- **News Filter** is responsible for allowing (when switched to Off) or prohibiting (when switched to On) the trades depending on their proximity to news announcements. Please see the Inputs chapter in the user guide for more information on the settings.

The fourth line, **Open hour – Close hour** is responsible for manually configuring active trading hours. Set by default to 00:00 and 23:59, which allows 24/7 trading.

Semi-EA Mode (Trading Panel)

Oracle Scalper Manager BUY

USDJPY	M1
129.593	22:16
00:50	
LOT SIZE	<input type="text" value="0.01"/>
Exit at the TakeProfit1 Level	
Exit at the TakeProfit2 Level	
Exit at the Opposite Signal	
Don't Enter	

Oracle Scalper Manager SELL

USDJPY	M1
128.533	02:04
00:54	
LOT SIZE	<input type="text" value="0.01"/>
Exit at the TakeProfit1 Level	
Exit at the TakeProfit2 Level	
Exit at the Opposite Signal	
Don't Enter	

	Oracle Scalper Manager BUY	- name
		- signal
currency pair -	USDJPY	M1
entry level -	129.593	22:16
	00:50	- timeframe
		- signal time
		- time left until the window closes
	LOT SIZE	<input type="text" value="0.01"/>
		- lot size
	Exit at the TakeProfit1 Level	
	Exit at the TakeProfit2 Level	
	Exit at the Opposite Signal	
	Don't Enter	

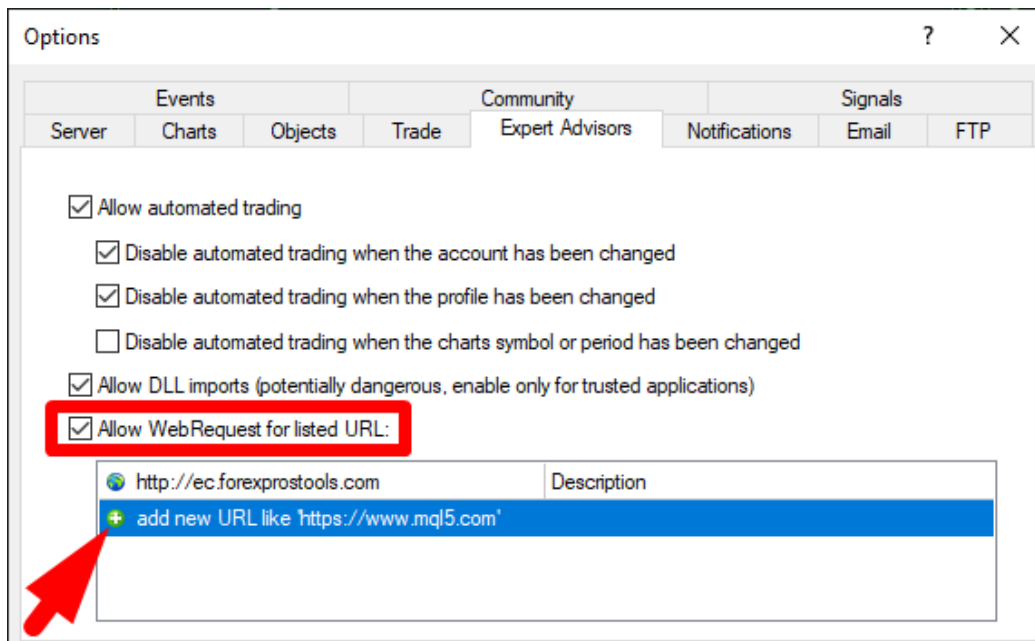
Pressing “Exit at the TakeProfit1 Level”, “Exit at the TakeProfit2 Level” or “Exit at the Opposite Signal” opens the trade with all the necessary settings. Trade will be closed automatically when the opposite signal is generated or at the chosen Take Profit level. If you chose “Exit at the TakeProfit1 / 2 Level” options and the TP level is not reached, the trade will be closed at the opposite signal.

Please note that for Oracle Scalper Manager to run correctly your MT4 should stay opened!

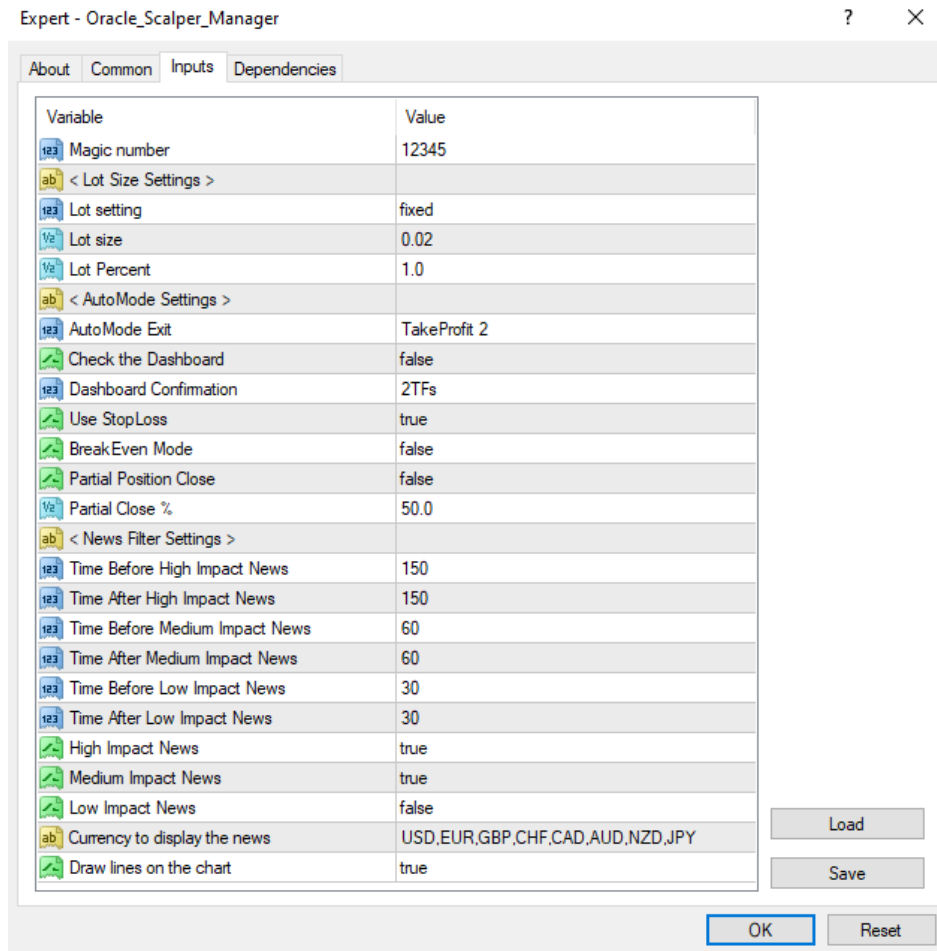
Important Rules

If you want to enable News Filter, please go Tools -> Options -> Expert Advisors and enable "Allow WebRequest for listed URL". Then click on the green "plus" button and copy and paste the following address into the field:

<http://ec.forexprostools.com>



Inputs and AutoMode



Magic number is responsible for displaying the magic number of the software.

< Lot Size Settings > (true only if the Manager is in full AutoMode)

Lot setting is set to “fixed” by default and uses the value set in the field “Lot Size”. If set to “percent per trade” then it will use the percentage set in the field “Lot Percent” (recommended values are 1-3 per trade).

Lot size allows you to manually configure lot size.

Lot percent allows you to manually configure percent per trade. For example, if set to 1.0, then you are risking not more than 1% of your balance in case the SL level is reached.

< AutoMode Settings > (true only if the Manager is in full AutoMode)

AutoMode Exit is responsible for whether EA will exit the trade at one of the TakeProfit levels or at the opposite signal.

Check the Dashboard is responsible for whether the Manager will take the Dashboard values into consideration when entering the trade.

Dashboard Confirmation field is enabled when **Check the Dashboard** is set to “true”. It is responsible for how many timeframes from the Dashboard are taken into consideration when entering the trade.

Use StopLoss is responsible for enabling or disabling SL levels when entering the trade.

BreakEven Mode allows to enable the setting in which Oracle Scalper moves StopLoss level to the entry level once the 1st TakeProfit level is reached.

*Works only when **AutoMode Exit** is set to TakeProfit 2

Partial Position Close is responsible for enabling the setting which allows for the position aimed at the 2nd TP level to be partially closed when the 1st TP level is reached.

*Works only when **AutoMode Exit** is set to TakeProfit 2 and **Lot size** is set to 0.02 at least

Partial Close % allows you to manually configure the percentage of the trade that will be partially closed. Set to 50 by default.

< News Filter Settings >

Time Before High Impact News allows you to manually configure the time period before high impact news when the trading is prohibited. Set to 150 by default.

Time After High Impact News allows you to manually configure the time period after high impact news when the trading is prohibited. Set to 150 by default.

Time Before Medium Impact News allows you to manually configure the time period before medium impact news when the trading is prohibited. Set to 60 by default.

Time After Medium Impact News allows you to manually configure the time period after medium impact news when the trading is prohibited. Set to 60 by default.

Time Before Low Impact News allows you to manually configure the time period before low impact news when the trading is prohibited. Set to 30 by default.

Time After Low Impact News allows you to manually configure the time period after low impact news when the trading is prohibited. Set to 30 by default.

High Impact News, Medium Impact News and **Low Impact News** are responsible for whether or not the trades will be prohibited at the time of those types of news.

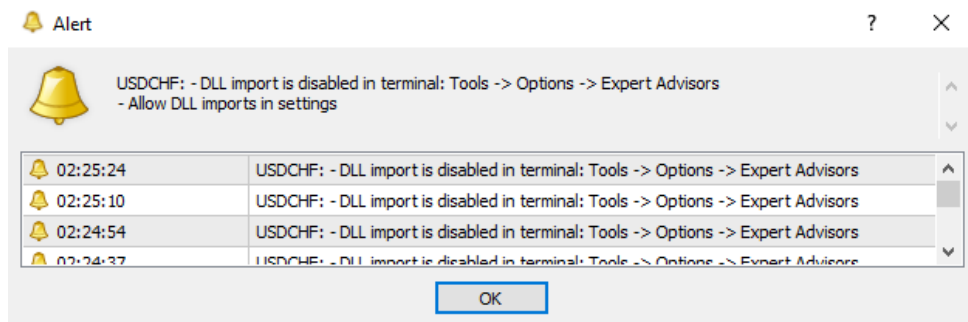
Currency to display the news is responsible for the set of currencies for which news filter is active when enabled.

Draw lines on the chart is responsible for displaying vertical lines on the chart at the time of new announcements. Green is for low impact news, orange is for medium impact news and red is for high impact news.

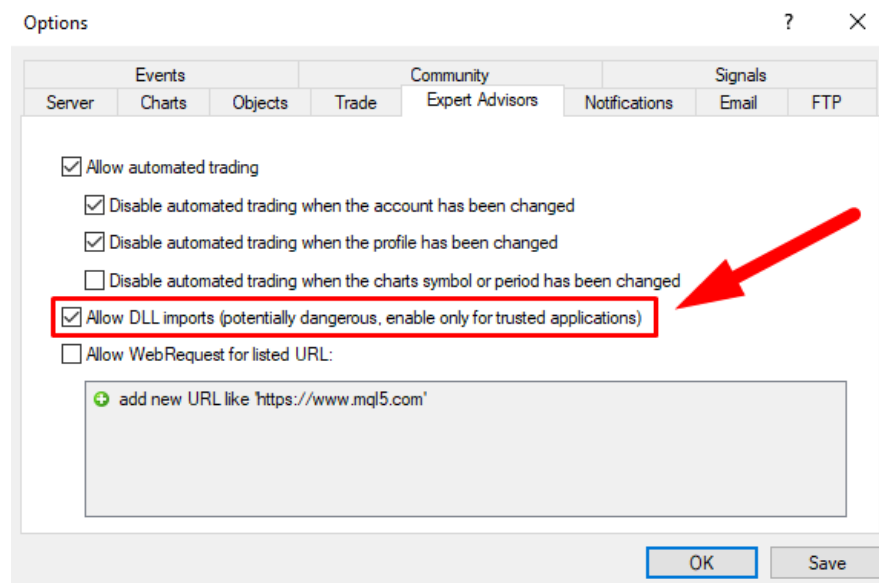
If your Oracle Scalper Manager is not working...

If you think that your software is not functioning properly, there are several possible reasons for that.

1. Please make sure you've unpacked the zip archive with the installation package and installed it into the right folder (**Oracle_Scalper_Manager.ex4** goes into the “**Experts**” folder, not the “Indicators” folder).
2. Please make sure that you haven't forgotten to install Oracle_Scalper.ex4 (the indicator) into the “Indicators” folder. The Manager will not function without it.
3. If you are getting the message “DLL import is disabled” like this:



Then please follow the instructions from the alert, go Tools - Options - Expert Advisors and allow DLL there:



4. If your license has not yet been activated, your chart will look like this:



(Note that this can be true even if there is a smiley face in the corner of your chart.)

Please contact us at support@altraforex.com or via a Telegram @olivermurphy and we will do our best to try and help you as soon as possible.

Disclaimer

Please be aware of the loss, risk, personal or otherwise consequences of the use and application of this book's content. The author and the publisher are not responsible for any actions that you undertake and will not be held accountable for any loss or injuries.

U.S. Government Required Disclaimer - Commodity Futures Trading Commission Futures and Options trading has large potential rewards, but also large potential risks. You must be aware of the risks and be willing to accept them in order to invest in the futures and options markets. Don't trade with money you can't afford to lose.

This is neither a solicitation nor an offer to Buy/Sell futures or options. No representation is being made that any account will or is likely to achieve profits or losses similar to those discussed on this web site. The past performance of any trading software or methodology is not necessarily indicative of future results.

CFTC RULE 4.41 - HYPOTHETICAL OR SIMULATED PERFORMANCE RESULTS HAVE CERTAIN LIMITATIONS. UNLIKE AN ACTUAL PERFORMANCE RECORD, SIMULATED RESULTS DO NOT REPRESENT ACTUAL TRADING. ALSO, SINCE THE TRADES HAVE NOT BEEN EXECUTED, THE RESULTS MAY HAVE UNDEROR-OVER COMPENSATED FOR THE IMPACT, IF ANY, OF CERTAIN MARKET FACTORS, SUCH AS LACK OF LIQUIDITY. SIMULATED TRADING PROGRAMS IN GENERAL ARE ALSO SUBJECT TO THE FACT THAT THEY ARE DESIGNED

WITH THE BENEFIT OF HINDSIGHT. NO REPRESENTATION IS BEING MADE THAT ANY ACCOUNT WILL OR IS LIKELY TO ACHIEVE PROFIT OR LOSSES SIMILAR TO THOSE SHOWN.

No representation is being made that any account will or is likely to achieve profits or losses similar to those shown. In fact, there are frequently sharp differences between hypothetical performance results and the actual results subsequently achieved by any particular trading program. Hypothetical trading does not involve financial risk, and no hypothetical trading record can completely account for the impact of financial risk in actual trading.

All information provided by our Altra Group is for educational purposes only and is not intended to provide financial advice. Any statements about profits or income, expressed or implied, does not represent a guarantee. Your actual trading may result in losses as no trading software is guaranteed. You accept full responsibilities for your actions, trades, profit or loss, and agree to hold individual entrepreneur doing business as Oliver Murphy and Altra Group and any authorized distributors of this information harmless in any and all ways. The use of this software constitutes acceptance of this user agreement.