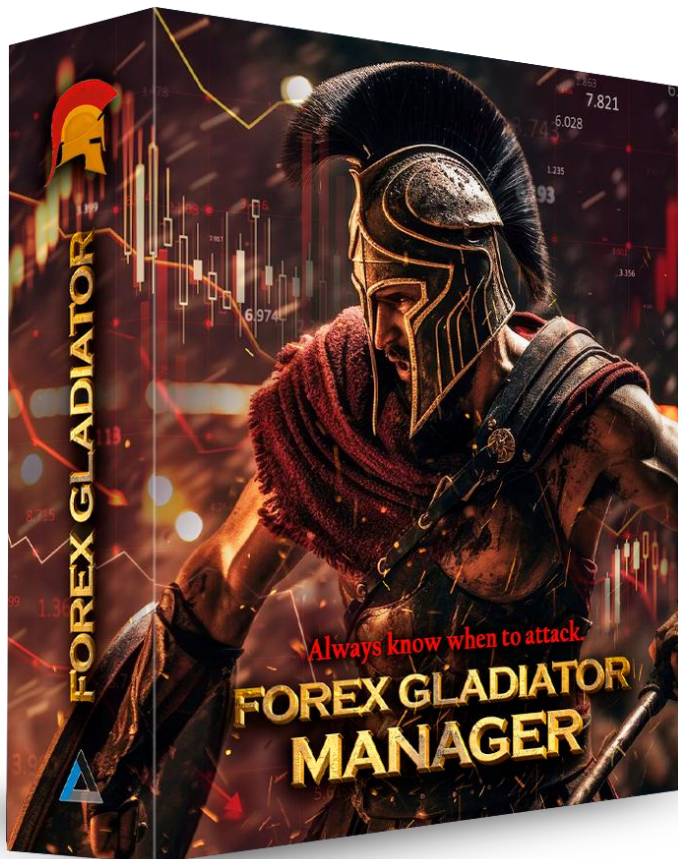


Forex Gladiator Manager



FXGladiator.com

Modes

Semi-EA:

Enter with 1 click
Exit automatically

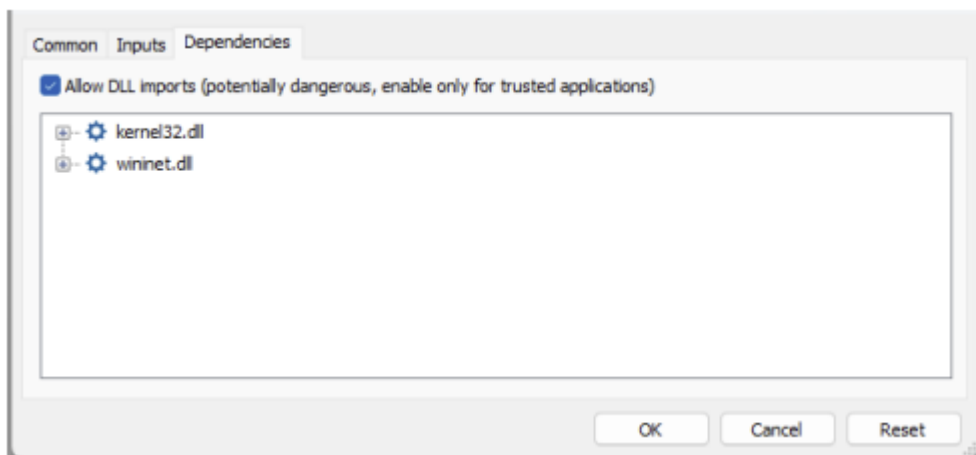
Full AutoMode:

100% automatized trading

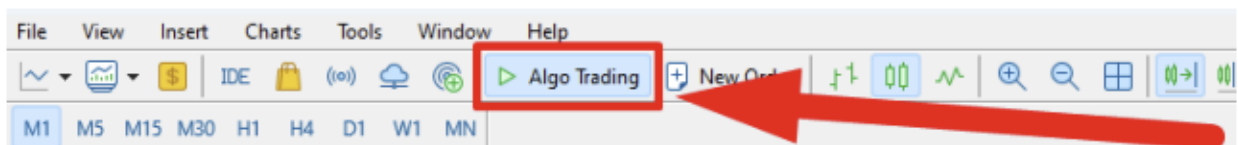
Installation

1. Unzip the file you've downloaded.
2. It contains a single file: **Forex_Gladiator_Manager.ex5**
3. Open your MT5.
4. Go to "File – Open Data Folder – MQL5".
5. Copy "Forex_Gladiator_Manager.ex5" from the folder you've downloaded and paste it into the "Experts" folder in MQL5.
6. Restart the MT5.

In order to attach the Manager please make sure to put Forex Gladiator indicator on the chart first and then drag and drop Forex Gladiator Manager to the same chart. Then enable option "Allow DLL imports" as shown below and click OK.



Please make sure to enable live trading:



If everything was done correctly, you will see a blue (not grey!) hat in the upper right corner of the chart:



PLEASE MAKE SURE THAT YOU'VE REGISTERED YOUR MT5 NUMBERS, OTHERWISE THE SOFTWARE WILL NOT WORK! Contact us at support@altraforex.com if you require assistance with license activation.

Forex Gladiator Manager Window

Please do not forget to load Forex Gladiator indicator on the chart FIRST, and load Forex Gladiator Manager after that.



After loading both Forex Gladiator and Forex Gladiator Manager, this window will appear on the screen. You can change its position in the Inputs and you can also move the window by dragging it over the chart.

The first line, **AutoMode** is responsible for choosing the mode of the Manager.

- Pressing **On (Full Auto)** button enables AutoMode: in this case the trades will be opened and closed 100% automatically.
- Pressing **Off (Semi-EA)** button enables Semi-EA mode: in this case each time a new signal is generated, a trading panel will pop up on the screen, allowing you to enter trade with one click. After that the trade will be closed automatically.

The second line, **Exit Option** is responsible for choosing what exit the software will aim at in AutoMode.

- Pressing **TakeProfit** or **Opposite signal** button will indicate your choice for an exit option.

The third line, **Trailing Stop** allows to enable the Smart Trailing Stop function.

*Please see the Inputs chapter in the user guide for more information on the settings.

- Pressing **On / Off button** enables or disables this function.

The fourth line, **Lot Size** is responsible for choosing the mode of lot configuration.

- Pressing **Fixed** button allows to manually configure lot size, you need to put the value you choose in the field in the same line.
- Pressing **% risk per trade** button allows you to manually configure percent per trade. For example, if set to 1.0, then you are risking not more than 1% of your balance in case the SL level is reached. You need to put the value you choose in the field in the same line (recommended values are 1-3 per trade).

The fifth line, **Enter Trades** is responsible for choosing which trades the tool enters.

- Pressing **All button** will enable the Manager to enter all trades, both Buy and Sell, generated by the indicator.
- Pressing **Only SELL** button will allow the Manager to enter only Sell trades generated by the indicator.
- Pressing **Only BUY** button will allow the Manager to enter only Buy trades generated by the indicator.

The sixth line, **Open hour – Close hour** is responsible for manually configuring active trading hours.

- Set by default to 00:00 and 25:59, which allows 24/7 trading.

The seventh line, **News Filter** is responsible for allowing or prohibiting the trades depending on their proximity to news announcements.

*Please see the Inputs chapter in the user guide for more information on the settings.

- Pressing **On / Off** button enables or disables this function.

Semi-EA Mode (Trading Panel)

Forex Gladiator Manager BUY	
USDCHF	M15
0.76854	11:15
14:40	
LOT SIZE	<input type="text" value="0.01"/>
Exit at TakeProfit Level	
Exit at Opposite Signal	
Enter with Traling Stop	
Don't Enter	

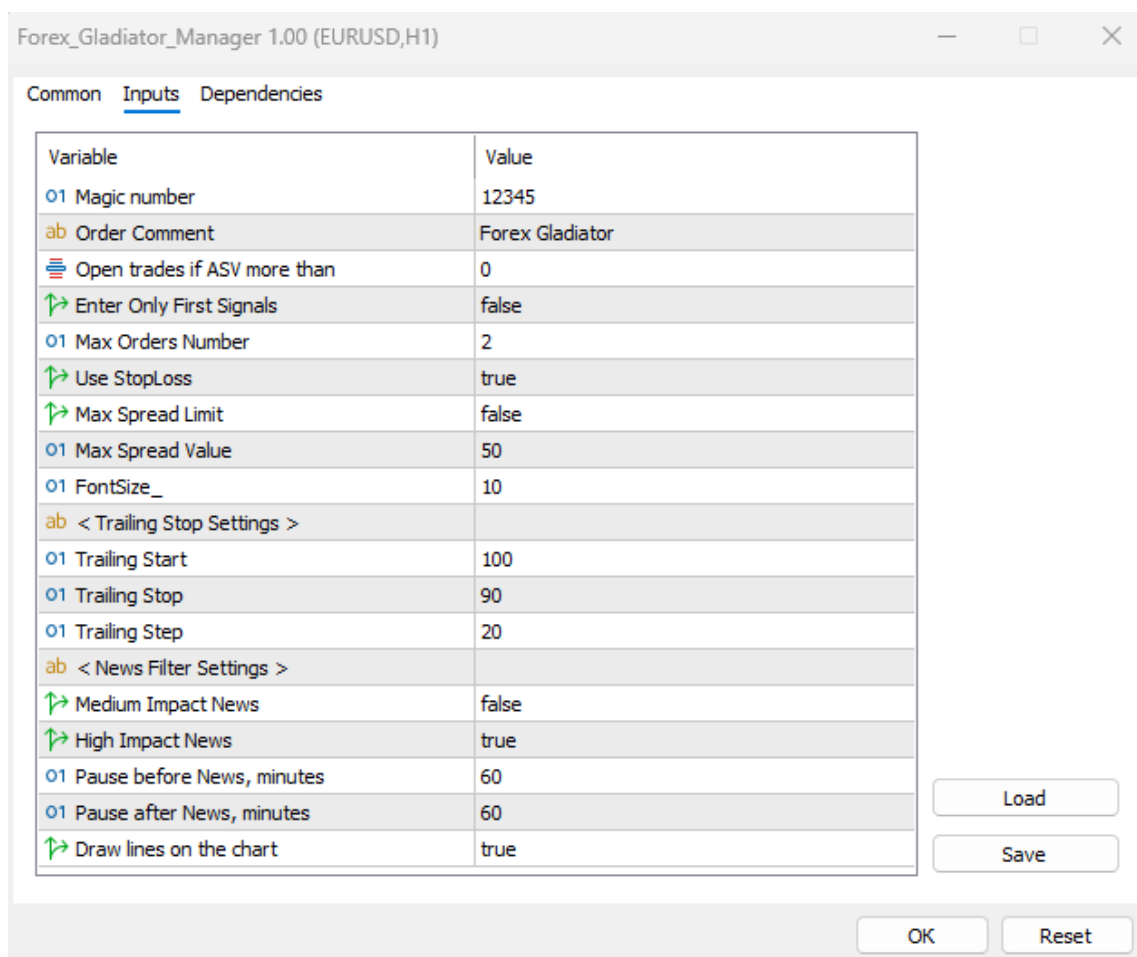
Forex Gladiator Manager SELL	
NZDUSD	M15
0.60422	11:30
09:43	
LOT SIZE	<input type="text" value="0.01"/>
Exit at TakeProfit Level	
Exit at Opposite Signal	
Enter with Traling Stop	
Don't Enter	

Forex Gladiator Manager SELL			
		- name	
		- signal	
currency pair -	NZDUSD	M15	- timeframe
entry level -	0.60422	11:30	- signal time
	09:43		- time left until the window closes
	LOT SIZE	<input type="text" value="0.01"/>	- lot size
		Exit at TakeProfit Level	
		Exit at Opposite Signal	
		Enter with Traling Stop	
		Don't Enter	

Pressing “Exit at TakeProfit Level”, “Exit at Opposite Signal” or “Enter with Trailing Stop” opens the trade with all the necessary settings. Trade will be closed automatically when the opposite signal is generated or at the chosen Take Profit level. If you chose “Exit at the TakeProfit Level” option and the TP level is not reached, the trade will be closed at the opposite signal.

Please note that for Forex Gladiator Manager to run correctly your MT5 should stay opened!

Inputs and AutoMode



Magic number is responsible for displaying the magic number of the software.

Order Comment allows you to manually configure the comment generated by the software at the time of the order opening.

Open trades if ASV more than is the setting that allows to implement Altra Signal Verifier to your automatic trading. If you have Altra Signal Verifier, then the Manager will open the trades only if the ASV shows a percentage higher than the one stated in this field. **If you do not have Altra Signal Verifier, the value should be left as the default 0 – otherwise your software will not work!** You can get Altra Signal Verifier with the bonus points you earned from your purchases with Altra Forex Group here: altraforex.net/bonusprogram

Enter Only First Signals allows you to set the software to enter trades only at the main trend change (bullish/bearish).

Max Order Number controls the maximum number of trades opened simultaneously.

Use StopLoss is responsible for enabling or disabling SL levels when entering the trade.

Max Spread Limit enables the limitation of the trades being opened depending on the spread level.

Max Spread is responsible for displaying the highest value which allows to open the trade. Set to 50 by default.

Font Size is responsible for depicting the font in the Manager window. If the text in the window is illegible, please try either changing the screen resolution of your PC or decreasing Font Size value.

< Trailing Stop Settings >

TrailingStart allows you to manually configure the level of gained profit at which TrailingStop starts working. Set to 10 by default. (Shows as 100).

TrailingStop allows you to manually configure the TrailingStop value. Set to 9 by default. (Shows as 90).

TrailingStep allows you to manually configure the variable that TrailingStop will follow each time it changes SL level. Set to 2 by default. (Shows as 20).

< News Filter Settings >

High Impact News and **Medium Impact News** are responsible for whether or not the trades will be prohibited at the time of those types of news.

Pause Before News allows you to manually configure the time period before news when the trading is prohibited. Set to 60 by default.

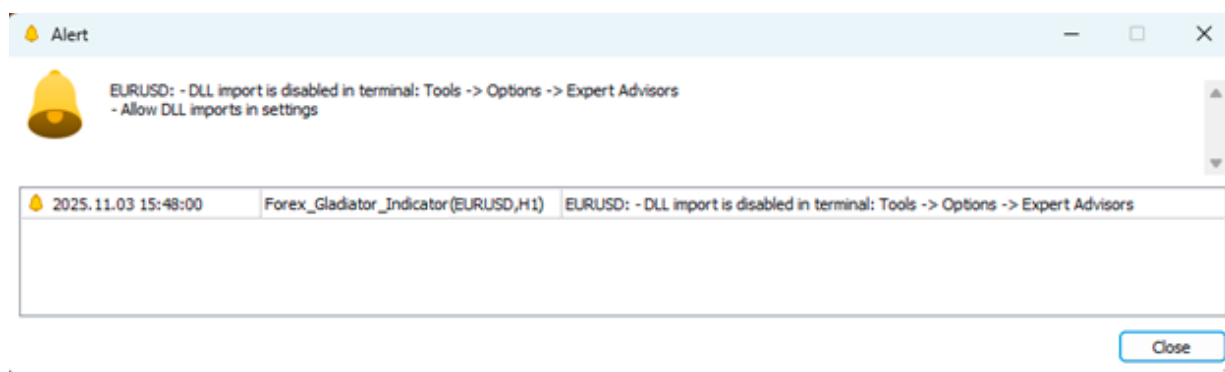
Pause After News allows you to manually configure the time period after news when the trading is prohibited. Set to 60 by default.

Draw lines on the chart is responsible for displaying vertical lines on the chart at the time of new announcements.

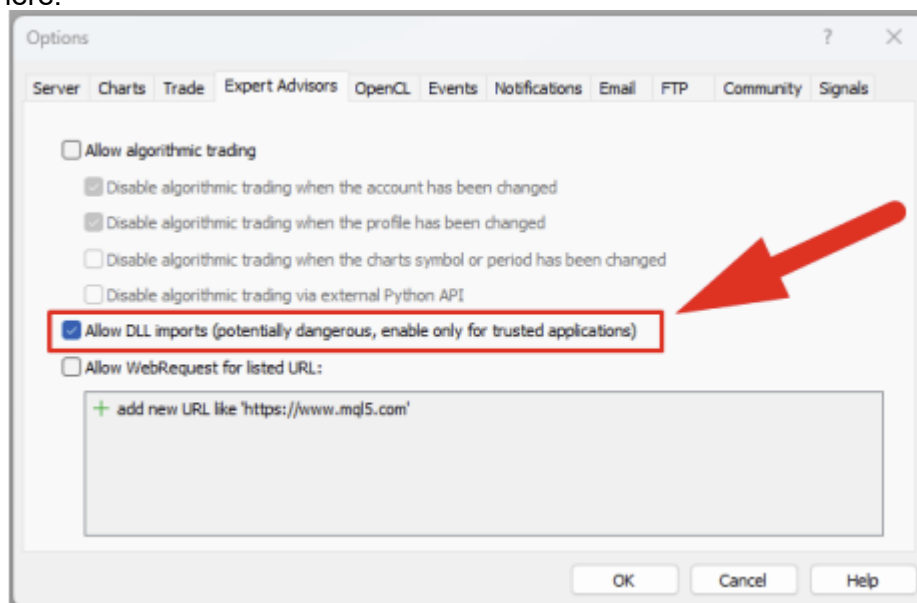
If your Forex Gladiator is not working...

If you think that your software is not functioning properly, there are several possible reasons for that.

1. Please make sure you've unpacked the zip archive with the installation package and installed it into the right folder (**Forex_Gladiator_Manager.ex5** goes into the “**Experts**” folder, not the “Indicators” folder).
2. Please make sure that you haven't forgotten to install Forex_Gladiator_Indicator.ex5 (the indicator) into the “Indicators” folder. The Manager will not function without it.
3. If you are getting the message “DLL import is disabled” like this:



Then please follow the instructions from the alert, go Tools - Options - Expert Advisors and allow DLL there:



4. If your chart is blank, it is possible that there has been some issue with the activation. Please contact us at support@altraforex.com or via a Telegram @olivermurphy and we will do our best to try and help you as soon as possible.

5. Even if you have the smiley face in the right upper corner but still feel that your Forex Gladiator Manager is malfunctioning, please open the “Experts” tab in the Terminal. If it says “Activation expired” there, please contact our team.

6. If you have any other concerns regarding your software, please don't hesitate to contact us at support@altraforex.com or via a Telegram [@olivermurphy](https://www.instagram.com/olivermurphy) and we will do our best to try and help you as soon as possible.